



PROJECT: Land SW of Belmesthorpe Road Ryhall, Rutland PE9 4NZ	STATUS: PLANNING		
CLIENT: SOS Tech Holdings Ltd	SCALE @ A2: 1:500	DRAWN BY: DH	DATE: 14.7.22
DRAWING: Existing Site Plan	DRAWING No: KA42696-BRY-ST-PL-A-02_A	REVISION: IT	

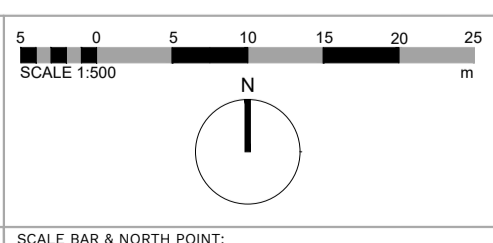
BERRYS

RIBA 
Chartered Practice

42 HEADLANDS
KETERING
NORHAMPTONSHIRE
NN15 7JR

TEL: 01536 412464
kettering@berrys.uk.com
www.berrys.uk.com

ORIGINATING OFFICE:



DO NOT SCALE THIS DOCUMENT - USE FIGURED DIMENSIONS ONLY
ALL DIMENSIONS MUST BE CHECKED ON SITE PRIOR TO
COMMENCEMENT OF ANY RELATED WORKS.
THIS DOCUMENT IS COPYRIGHT OF THE ORIGINATOR, IT MUST NOT
BE ALTERED, REPRODUCED OR DISTRIBUTED WITHOUT PRIOR
CONSENT.
THIS DOCUMENT MUST BE READ IN CONJUNCTION WITH ALL
SUPPORTING DOCUMENTS PRODUCED BY THE ORIGINATOR AND
OTHER PROJECT DISCIPLINES.
OS MAPPING OBTAINED FROM PROMAP LICENCE No. 10002432
REPRODUCED BY BERRYS UNDER OS LICENCE No. 100003668

A	AMENDED TO COUNCIL COMMENTS	26.01.24	CML	SB
REV	DESCRIPTION	DATE	BY	CHKD



PROJECT: Land SW of Belmesthorpe Road Ryhall, Rutland PE9 4NZ	STATUS: PLANNING		
CLIENT: SOS Tech Holdings Ltd.	SCALE @ A1: 1:200	DRAWN BY: DH	DATE: 11.07.22
DRAWING: Proposed Site Plan	DRAWING No: KA42696-BRY-00-PL-A-03_D	REVISION: IT	

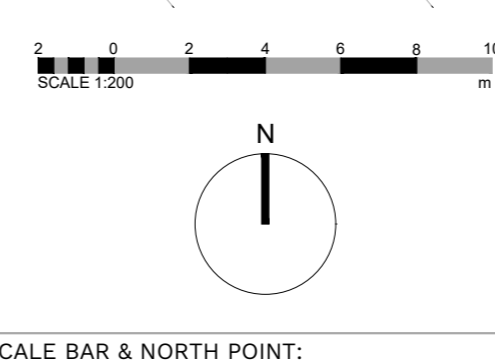


RIBA 
Chartered Practice

42 HEADLANDS
KETTERING
NORHAMPTONSHIRE
NN15 7HR

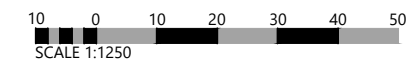
TEL: 01536 412464
kettering@berrys.uk.com
www.berrys.uk.com

ORIGINATING OFFICE:

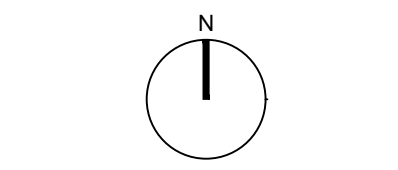


DO NOT SCALE THIS DOCUMENT - USE FIGURED DIMENSIONS ONLY
ALL DIMENSIONS MUST BE CHECKED ON SITE PRIOR TO COMMENCEMENT OF ANY RELATED WORKS.
THIS DOCUMENT IS COPYRIGHT OF THE ORIGINATOR. IT MUST NOT BE ALTERED, REPRODUCED OR DISTRIBUTED WITHOUT PRIOR CONSENT.
THIS DOCUMENT MUST BE READ IN CONJUNCTION WITH ALL SUPPORTING DOCUMENTS PRODUCED BY THE ORIGINATOR AND OTHER PROJECT DISCIPLINES.
OS MAPPING OBTAINED FROM PROMAP LICENCE No. 100022432
REPRODUCED BY BERRYS UNDER OS LICENCE No. 100003668

REV	DESCRIPTION	DATE	BY	CHKD
D	AMENDED TO COMMENTS 26.01.24	CML	SB	
C	AMENDED TO COMMENTS 04.04.23	CML	IT	
B	AMENDED TO COMMENTS 30.03.23	CML	IT	
A	AMENDED TO COMMENTS 24.02.23	CML	SM	



DO NOT SCALE THIS DOCUMENT – USE FIGURED DIMENSIONS ONLY.
 ALL DIMENSIONS MUST BE CHECKED ON SITE PRIOR TO COMMENCEMENT OF ANY RELATED WORKS.
 THIS DOCUMENT IS COPYRIGHT OF THE ORIGINATOR. IT MUST NOT BE ALTERED, REPRODUCED OR DISTRIBUTED WITHOUT PRIOR CONSENT.
 THIS DOCUMENT MUST BE READ IN CONJUNCTION WITH ALL SUPPORTING DOCUMENTS PRODUCED BY THE ORIGINATOR AND OTHER PROJECT DISCIPLINES.
 OS MAPPING OBTAINED FROM PROMAP LICENCE No. 100022432
 REPRODUCED BY BERRYS UNDER OS LICENCE No. 100003668
DISCLAIMER NOTES:



NORTH POINT:



42 HEADLANDS
 KETTERING
 NORHAMPTONSHIRE
 NN15 7HR
 TEL: 01536 412464
 kettering@berrys.uk.com
 www.berrys.uk.com

ORIGINATING OFFICE:

REV	DESCRIPTION	DATE	BY	CHKD
-	-	00.00.00	-	-



STATUS: PLANNING			
CLIENT: SOS Tech Holdings			
PROJECT: Land South of Belmesthorpe Road Ryhall, Stamford Rutland			
DRAWING: Site Location Plan			
SCALE @ A1: 1:1250	DRAWN BY: DH	CHKD BY: IT	DATE: 03.11.20
DRAWING No: KA38745 -BRY-ST-PL-A-01			REVISION: --